

Write your name here

Surname

Other names

**Pearson Edexcel**  
Level 1/Level 2 GCSE (9–1)

Centre Number

--	--

Candidate Number

# Mathematics

## Paper 1 (Non-Calculator)



**Higher Tier**

Thursday 24 May 2018 – Morning  
**Time: 1 hour 30 minutes**

Paper Reference

**1MA1/1H**

**You must have:** Ruler graduated in centimetres and millimetres, protractor, pair of compasses, pen, HB pencil, eraser.  
Tracing paper may be used.

Total Marks



### Instructions

- Use **black** ink or ball-point pen.
- **Fill in the boxes** at the top of this page with your name, centre number and candidate number.
- Answer **all** questions.
- Answer the questions in the spaces provided – *there may be more space than you need.*
- You must **show all your working**.
- Diagrams are **NOT** accurately drawn, unless otherwise indicated.
- **Calculators may not be used.**

### Information

- The total mark for this paper is 80
- The marks for **each** question are shown in brackets – *use this as a guide as to how much time to spend on each question.*

### Advice

- Read each question carefully before you start to answer it.
- Keep an eye on the time.
- Try to answer every question.
- Check your answers if you have time at the end.

Turn over ►

P48861A

©2018 Pearson Education Ltd.

6/7/17/18/17/1/



  
**Pearson**

Answer ALL questions.

Write your answers in the spaces provided.

You must write down all the stages in your working.

1 (a) Work out  $2\frac{1}{7} + 1\frac{1}{4}$

$$\begin{array}{r} \frac{15}{7} + \frac{5}{4} \\ \times 4 \quad \times 7 \\ \hline \frac{60}{28} + \frac{35}{28} \\ \hline \frac{95}{28} \end{array}$$

$$\begin{array}{r} 2 \\ 28 \\ \hline 3 \times \\ \hline 84 \end{array}$$

$$3\frac{11}{28}$$

(b) Work out  $1\frac{1}{5} \div \frac{3}{4}$

Give your answer as a mixed number in its simplest form.

$$\begin{array}{r} \frac{6}{5} \div \frac{3}{4} \\ = \frac{6}{5} \times \frac{4}{3} = \frac{8}{5} \end{array}$$

$$1\frac{3}{5}$$

(Total for Question 1 is 4 marks)

DO NOT WRITE IN THIS AREA

DO NOT WRITE IN THIS AREA

DO NOT WRITE IN THIS AREA



DO NOT WRITE IN THIS AREA

DO NOT WRITE IN THIS AREA

DO NOT WRITE IN THIS AREA

2 In a village

the number of houses and the number of flats are in the ratio 7 : 4  
the number of flats and the number of bungalows are in the ratio 8 : 5

H : F

F : B

There are 50 bungalows in the village.

How many houses are there in the village?

$$\begin{array}{r}
 H : F \\
 7 : 4 \\
 \swarrow \quad \searrow \\
 \times 20 \quad 140 : 80 \quad \times 20 \\
 \end{array}
 \qquad
 \begin{array}{r}
 F : B \\
 8 : 5 \\
 80 : 50
 \end{array}$$

140

(Total for Question 2 is 3 marks)



- 3 Renee buys 5 kg of sweets to sell.  
She pays £10 for the sweets.

5000g

Renee puts all the sweets into bags.  
She puts 250 g of sweets into each bag.  
She sells each bag of sweets for 65p.

$$\frac{5000}{250} = 20 \text{ bags}$$

Renee sells all the bags of sweets.

Work out her percentage profit.

$$65 \times 20 = 1300 \text{ p} \\ = \pounds 13$$

$$\text{Profit} = 13 - 10 = \pounds 3$$

$$\% \text{ profit} = \frac{3}{10} \times 100 = 30\%$$

30 %

(Total for Question 3 is 4 marks)

DO NOT WRITE IN THIS AREA

DO NOT WRITE IN THIS AREA

DO NOT WRITE IN THIS AREA



DO NOT WRITE IN THIS AREA

DO NOT WRITE IN THIS AREA

DO NOT WRITE IN THIS AREA

Rounding to 1st  
3000 miles

4 A cycle race across America is 3069.25 miles in length.

Juan knows his average speed for his previous races is 15.12 miles per hour.  
For the next race across America he will cycle for 8 hours per day.

20 mph  
8 hours per day

(a) Estimate how many days Juan will take to complete the race.

$$\frac{3000}{20} = 150 \text{ hours at } 20 \text{ mph}$$

$$8 \overline{) 150.000}$$

19 days  
(3)

Juan trains for the race.  
The average speed he can cycle at increases.  
It is now 16.27 miles per hour.

(b) How does this affect your answer to part (a)?

As 16.27 rounds to 20 mph to 1sf, answer will be the same  
(1)

(Total for Question 4 is 4 marks)

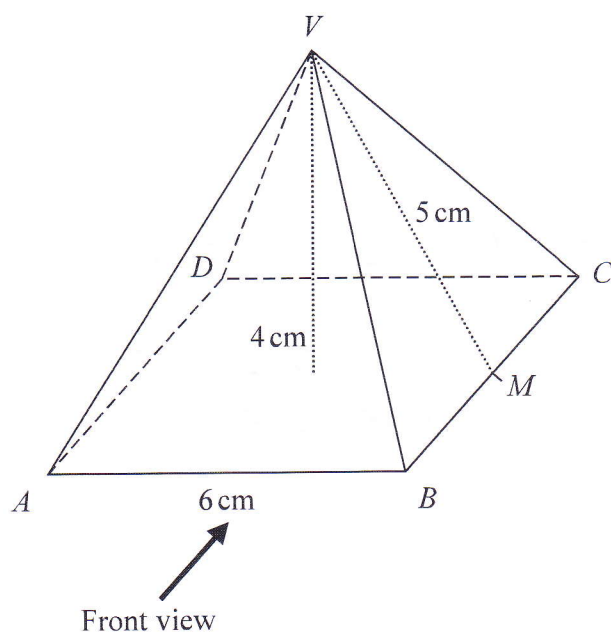


DO NOT WRITE IN THIS AREA

DO NOT WRITE IN THIS AREA

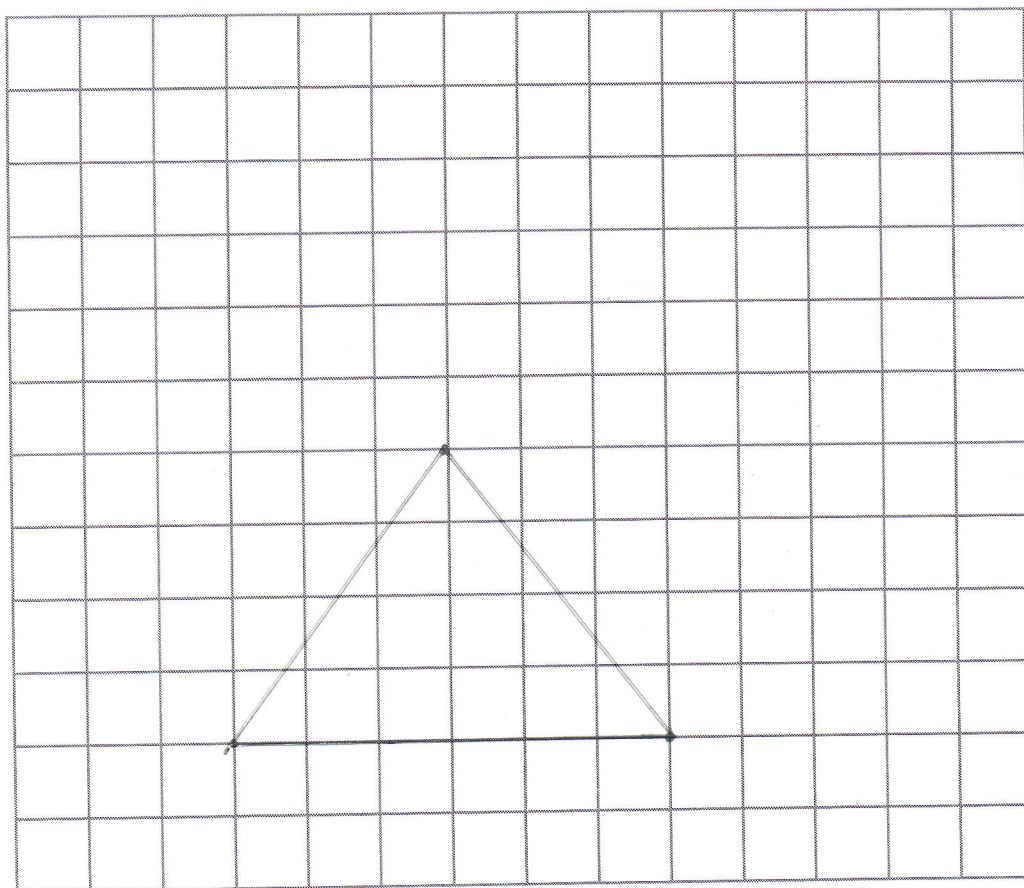
DO NOT WRITE IN THIS AREA

5 Here is a solid square-based pyramid,  $VABCD$ .



The base of the pyramid is a square of side 6 cm.  
The height of the pyramid is 4 cm.  
 $M$  is the midpoint of  $BC$  and  $VM = 5$  cm.

(a) Draw an accurate front elevation of the pyramid from the direction of the arrow.



(2)



(b) Work out the total surface area of the pyramid.

$$\begin{aligned} \text{Area of each triangle} &= \frac{1}{2} \times 6 \times 5 \\ &= 15 \text{ cm}^2 \end{aligned}$$

$$\begin{aligned} \text{Total} &= (4 \times 15) + 6^2 \\ &= 60 + 36 \end{aligned}$$

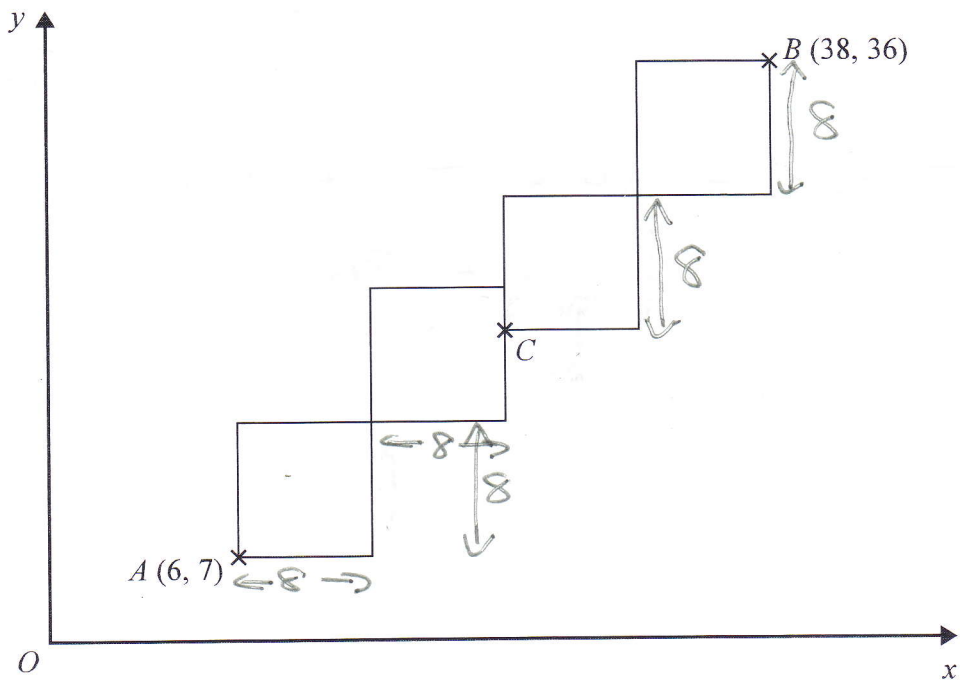
$$\begin{aligned} &96 \text{ cm}^2 \\ &(4) \end{aligned}$$

(Total for Question 5 is 6 marks)



P 4 8 8 6 1 A 0 7 2 0

- 6 A pattern is made from four identical squares.  
The sides of the squares are parallel to the axes.



Point A has coordinates (6, 7)  
Point B has coordinates (38, 36)  
Point C is marked on the diagram.

Work out the coordinates of C.

$$(38 - 6) \div 4 = 8 \text{ units}$$

$$x \text{ coord} = 6 + 2 \times 8 = 22$$

$$y \text{ coord} = 36 - 2 \times 8 = 20$$

(22, 20)

(Total for Question 6 is 5 marks)

DO NOT WRITE IN THIS AREA

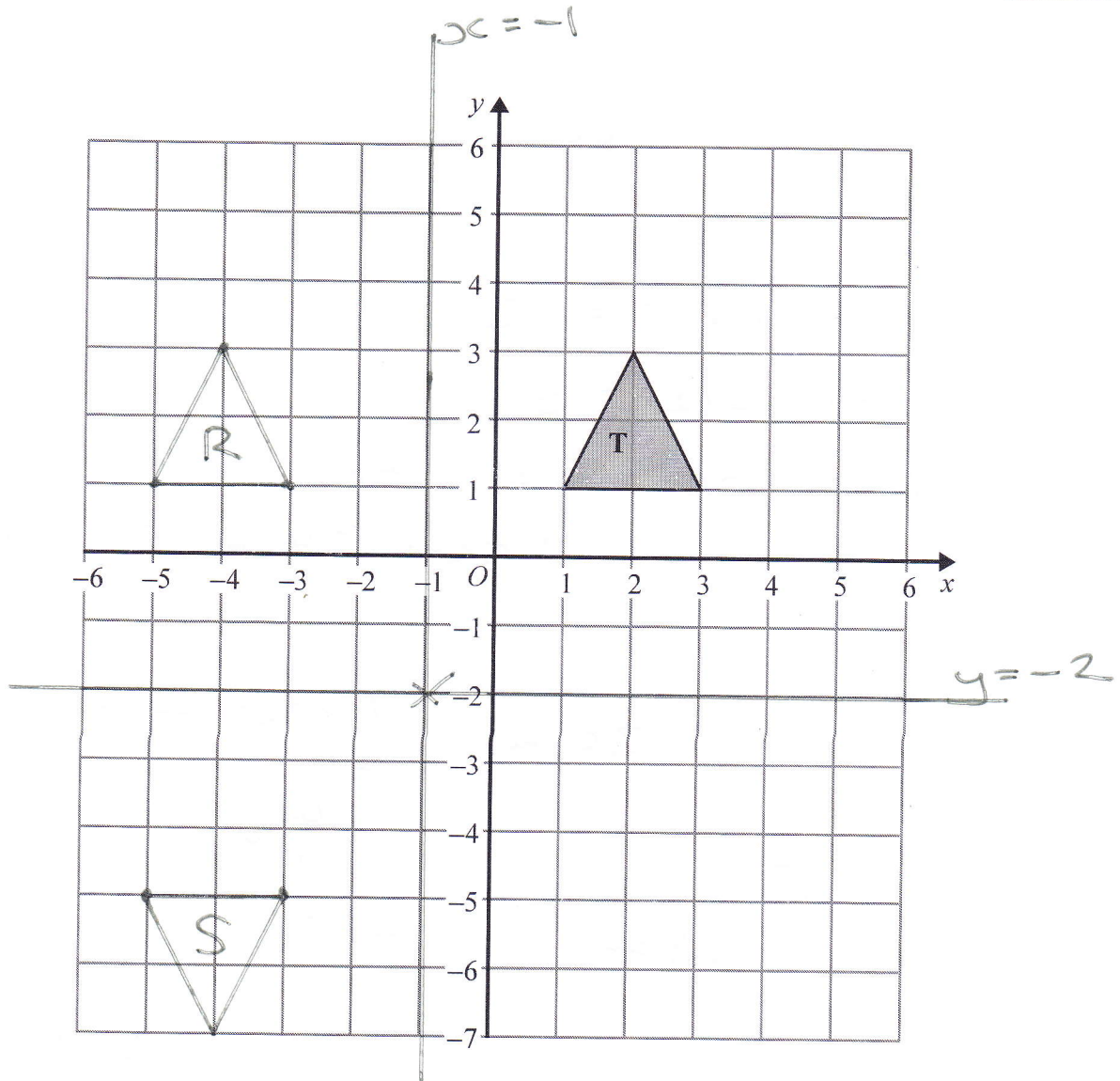
DO NOT WRITE IN THIS AREA

DO NOT WRITE IN THIS AREA





7



Shape **T** is reflected in the line  $x = -1$  to give shape **R**.  
 Shape **R** is reflected in the line  $y = -2$  to give shape **S**.

Describe the **single** transformation that will map shape **T** to shape **S**.

Rotation  $180^\circ$  about point  $(-1, -2)$

(Total for Question 7 is 2 marks)



P 4 8 8 6 1 A 0 9 2 0

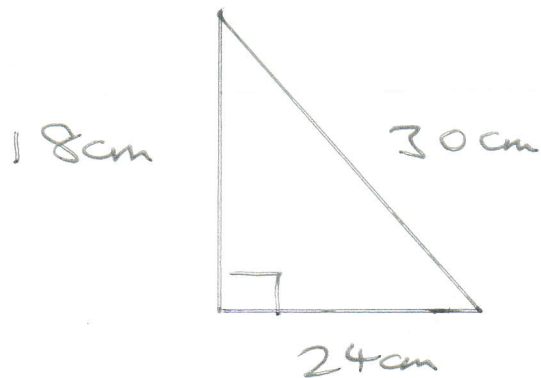
- 8 The perimeter of a right-angled triangle is 72 cm.  
The lengths of its sides are in the ratio 3 : 4 : 5  
Work out the area of the triangle.  $\times 6$

$$3 + 4 + 5 = 12$$

$$72 \div 12 = 6$$

Sides are  $3 \times 6, 4 \times 6, 5 \times 6$

18 cm, 24 cm, 30 cm



$$\text{Area} = \frac{1}{2} \times 18 \times 24$$
$$\begin{array}{r} 3 \\ 24 \\ \hline 9 \times \\ 216 \end{array}$$

..... 216 ..... cm<sup>2</sup>

(Total for Question 8 is 4 marks)

DO NOT WRITE IN THIS AREA

DO NOT WRITE IN THIS AREA

DO NOT WRITE IN THIS AREA



DO NOT WRITE IN THIS AREA

9 (a) Write down the value of  $36^{\frac{1}{2}}$

$\frac{6}{(1)}$

(b) Write down the value of  $23^0$

$\frac{1}{(1)}$

(c) Work out the value of  $27^{-\frac{2}{3}}$

$$\frac{1}{(27^{\frac{1}{3}})^2} = \frac{1}{3^2} = \frac{1}{9}$$

$\frac{1}{9}$   
(2)

(Total for Question 9 is 4 marks)

DO NOT WRITE IN THIS AREA



DO NOT WRITE IN THIS AREA

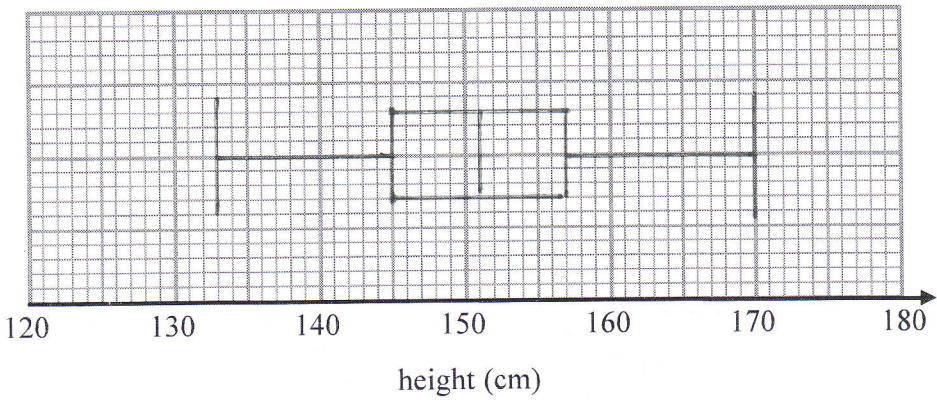
DO NOT WRITE IN THIS AREA

DO NOT WRITE IN THIS AREA

10 The table gives some information about the heights of 80 girls.

Least height	133 cm
Greatest height	170 cm
Lower quartile	145 cm
Upper quartile	157 cm
Median	151 cm

(a) Draw a box plot to represent this information.



(3)

(b) Work out an estimate for the number of these girls with a height between 133 cm and 157 cm.

↑ upper quartile

↑ lowest

$$\frac{3}{4} \times 80$$

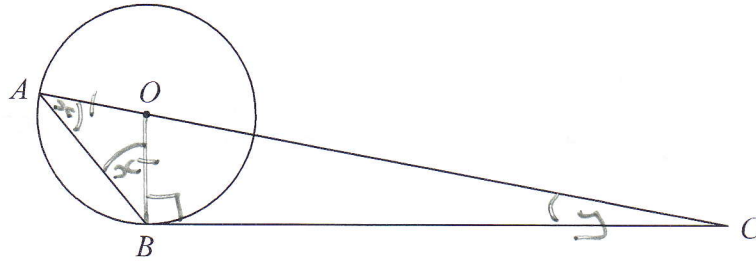
60

(2)

(Total for Question 10 is 5 marks)



11



$A$  and  $B$  are points on a circle, centre  $O$ .

$BC$  is a tangent to the circle.

$AOC$  is a straight line.

Angle  $ABO = x^\circ$ .

Find the size of angle  $ACB$ , in terms of  $x$ .

Give your answer in its simplest form.

Give reasons for each stage of your working.

$$\angle OAB = x \quad (\text{isosceles triangle } AOB)$$

$$\angle OBC = 90^\circ \quad (\text{angle between tangent and radius} = 90^\circ)$$

$$y + 90 + x + x = 180^\circ$$

(angles in  $\triangle ABC$  add to  $180^\circ$ )

$$y = 180 - 90 - 2x$$

$$y = \angle ACB = 90 - 2x$$

(Total for Question 11 is 5 marks)



P 4 8 8 6 1 A 0 1 3 2 0

12 Prove that the square of an odd number is always 1 more than a multiple of 4



$2n+1$  is odd number

$$\begin{aligned}(2n+1)(2n+1) &= 4n^2 + 2n + 2n + 1 \\ &= 4n^2 + 4n + 1 \\ &= 4(n^2 + n) + 1\end{aligned}$$

(Total for Question 12 is 4 marks)

13  $\sqrt{5}(\sqrt{8} + \sqrt{18})$  can be written in the form  $a\sqrt{10}$  where  $a$  is an integer.

Find the value of  $a$ .

$$\begin{aligned}\sqrt{5}(\sqrt{8} + \sqrt{18}) &= \sqrt{40} + \sqrt{90} \\ &= \sqrt{4}\sqrt{10} + \sqrt{9}\sqrt{10} \\ &= 2\sqrt{10} + 3\sqrt{10} \\ &= 5\sqrt{10}\end{aligned}$$

$a = 5$

(Total for Question 13 is 3 marks)



14  $y$  is inversely proportional to  $d^2$

When  $d = 10$ ,  $y = 4$

$d$  is directly proportional to  $x^2$

When  $x = 2$ ,  $d = 24$

Find a formula for  $y$  in terms of  $x$ .

Give your answer in its simplest form.

$$y \propto \frac{1}{d^2}$$

$$y = \frac{k}{d^2}$$

$$4 = \frac{k}{100}$$

$$k = 400$$

$$\therefore y = \frac{400}{d^2} \quad (1)$$

$$d \propto x^2$$

$$d = kx^2$$

$$24 = k \times 4$$

$$k = 6$$

$$\therefore d = 6x^2$$

(2)

sub  $d = 6x^2$  in (1)

$$y = \frac{400}{\frac{36x^4}{9}} = \frac{100}{9x^4}$$

$$y = \frac{100}{9x^4}$$

(Total for Question 14 is 5 marks)



15 (a) Factorise  $a^2 - b^2$

$$a = x^2 + 4 \quad b = x^2 - 2 \quad (a+b)(a-b) \quad (1)$$

(b) Hence, or otherwise, simplify fully  $(x^2 + 4)^2 - (x^2 - 2)^2$

$$\begin{aligned} &= (x^2 + 4 + x^2 - 2)(x^2 + 4 - (x^2 - 2)) \\ &= (2x^2 + 2)(x^2 + 4 - x^2 + 2) \\ &= (2x^2 + 2)(6) \\ &= 2(x^2 + 1) \times 6 \\ &= 12(x^2 + 1) \\ &= 12x^2 + 12 \end{aligned} \quad \underline{12x^2 + 12} \quad (3)$$

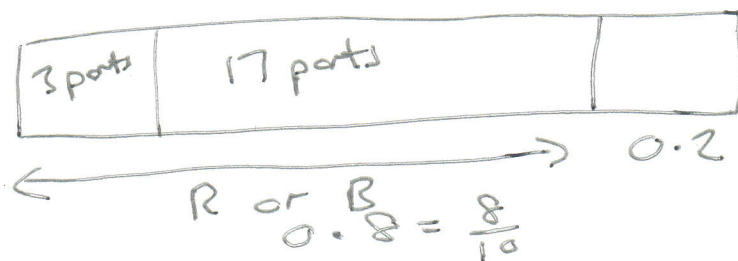
(Total for Question 15 is 4 marks)

16 There are only red counters, blue counters and purple counters in a bag. R : B  
The ratio of the number of red counters to the number of blue counters is 3 : 17

Sam takes at random a counter from the bag.  
The probability that the counter is purple is 0.2

$$P(R \text{ or } B) = 0.8$$

Work out the probability that Sam takes a red counter.



$$3 + 17 = 20 \text{ parts}$$

$$\frac{3}{20} \times \frac{8}{10} = \frac{24}{200} = \frac{12}{100} \quad \underline{0.12}$$

(Total for Question 16 is 3 marks)





DO NOT WRITE IN THIS AREA

DO NOT WRITE IN THIS AREA

DO NOT WRITE IN THIS AREA

17 Simplify fully  $\frac{3x^2 - 8x - 3}{2x^2 - 6x}$

$$= \frac{(3x + 1)(\cancel{x - 3})}{2x(\cancel{x - 3})}$$

$$= \frac{3x + 1}{2x}$$

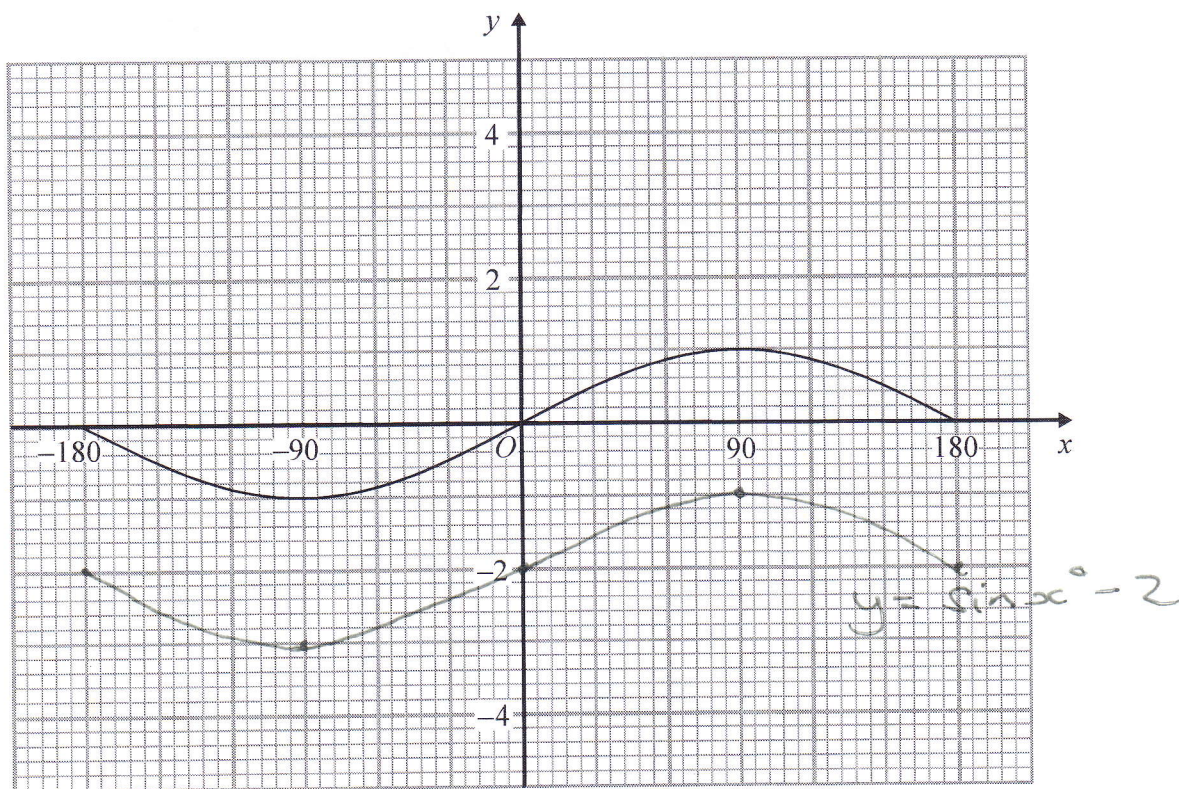
$$\frac{3x + 1}{2x}$$

(Total for Question 17 is 3 marks)



P 4 8 8 6 1 A 0 1 7 2 0

18 Here is the graph of  $y = \sin x^\circ$  for  $-180 \leq x \leq 180$



On the grid, sketch the graph of  $y = \sin x^\circ - 2$  for  $-180 \leq x \leq 180$

*shifted down 2 units*

(Total for Question 18 is 2 marks)

DO NOT WRITE IN THIS AREA

DO NOT WRITE IN THIS AREA

DO NOT WRITE IN THIS AREA



- 19 The point  $P$  has coordinates  $(3, 4)$   
The point  $Q$  has coordinates  $(a, b)$

A line perpendicular to  $PQ$  is given by the equation  $3x + 2y = 7$

Find an expression for  $b$  in terms of  $a$ .

$$\text{gradient } PQ = \frac{4-b}{3-a}$$

$$\text{perpendicular gradient} = \frac{a-3}{4-b}$$

Perpendicular  $3x + 2y = 7$

$$2y = -3x + 7$$
$$y = -\frac{3}{2}x + \frac{7}{2}$$

$$\therefore -\frac{3}{2} = \frac{a-3}{4-b}$$

$$-3(4-b) = 2(a-3)$$

$$-12 + 3b = 2a - 6$$

$$3b = 2a - 6 + 12$$

$$3b = 2a + 6$$

$$b = \frac{2}{3}a + 2$$

$$b = \frac{2}{3}a + 2$$

(Total for Question 19 is 5 marks)



20  $n$  is an integer such that  $3n + 2 \leq 14$  and  $\frac{6n}{n^2 + 5} > 1$

Find all the possible values of  $n$ .

$$\begin{aligned}3n + 2 &\leq 14 \\3n &\leq 14 - 2 \\3n &\leq 12 \\n &\leq 4\end{aligned}$$

$$\frac{6n}{n^2 + 5} > 1$$

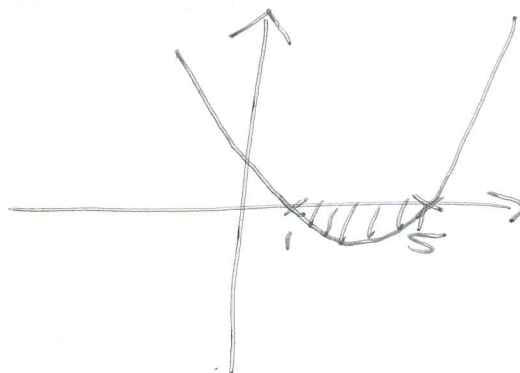
$$6n > n^2 + 5$$

$$0 > n^2 - 6n + 5$$

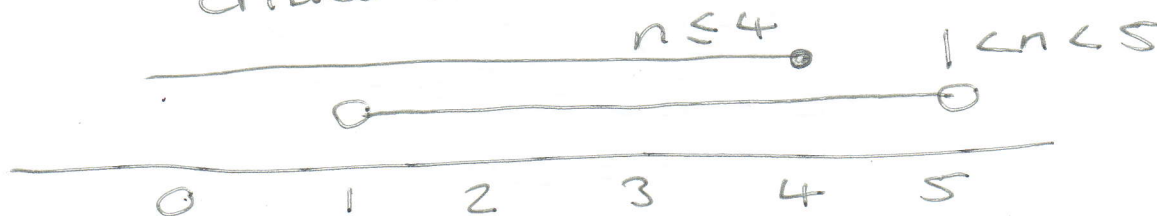
$$n^2 - 6n + 5 < 0$$

$$(n - 5)(n - 1) < 0$$

$n = 5, n = 1$   
critical values



$$1 < n < 5$$



$$n = 2, 3, 4$$

(Total for Question 20 is 5 marks)

TOTAL FOR PAPER IS 80 MARKS

